

MA-5588H4

8X8 HDMI 2.0a Matrix with Audio Extractor & ARC

User Manual



rev: 190314
Made in Taiwan



Safety and Notice

The **MA-5588H4 8x8 HDMI 2.0a Matrix with Audio Extractor & ARC** has been tested for conformance to safety regulations and requirements, and has been certified for international use. However, like all electronic equipment, the **MA-5588H4** should be used with care. Please read and follow the safety instructions to protect yourself from possible injury and to minimize the risk of damage to the unit.

- Follow all instructions and warnings marked on this unit.
- Do not attempt to service this unit yourself, except where explained in this manual.
- Provide proper ventilation and air circulation and do not use near water.
- Keep objects that might damage the device and assure that the placement of this unit is on a stable surface.
- Use only the power adapter and power cords and connection cables designed for this unit.
- Do not use liquid or aerosol cleaners to clean this unit. Always unplug the power to the device before cleaning.



TABLE OF CONTENTS

INTRODUCTION.....	1
EATURES.....	1
PACKAGE CONTENTS.....	1
SPECIFICATIONS.....	2
PANEL DESCRIPTIONS.....	3
HARDWARE INSTALLATION.....	4
CONNECTION DIAGRAM.....	4
OPERATION APPROACH.....	5
EDID LEARNING.....	20
FAQ.....	21
WARRANTY.....	22

INTRODUCTION

The **MA-5588H4 8x8 HDMI 2.0a matrix with Audio Extractor & ARC** provides the most flexible and cost effective solution in the market to route high definition video sources plus multi-channel (up to 7.1-channel) audio from any of the eight HDMI sources to the remote displays at the same time. **MA-5588H4** supports HDR and the true 4K2K video! Besides, this device supports the separation of high quality digital S/PDIF (RCA) audio from the incoming HDMI signal without losing any active audio channels from audio bit-stream

With the upmost HDR/4K2K@60 4:4:4 8bits and high definition audio support, MA-5588H4 is well suited for use in home theater, conference room presentation systems, or other similar setting or application

FEATURES

- HDMI 2.0a compliant
- Supports 4K2K@60 4:4:4 8bits
- Supports HDR*, which is 4K2K@60 4:2:0 10bits
- HDCP 2.2 compliant
- Allows any source to be displayed on multiple displays at the same time
- Allows any HDMI display to view any HDMI source at any time
- Supports 7.1 channel audio
- Supports ARC & Audio Extraction via RCA
- S/PDIF(RCA) audio Format: PCM2, Dolby 5.1, DTS 5.1
- Supports default HDMI EDID and learns the EDID of displays to matrix switcher
- The matrix switcher can switch every output channels from any HDMI inputs by Push button, IR remote control, RS-232, Web Interface, Control 4, IP control and cloud control
- Easy installation with rack-mounting
- Fast response time – 3~4 seconds for channel switch



* HDR = High Dynamic Range.

PACKAGE CONTENTS

- 1x MA-5588H4
- 1x IR Receiver
- 1x DC 12V 7.5A
- 1x IR Remote control*
- 1x Rack-mounting ear set
- 1x Installation software CD
- 1x User Manual

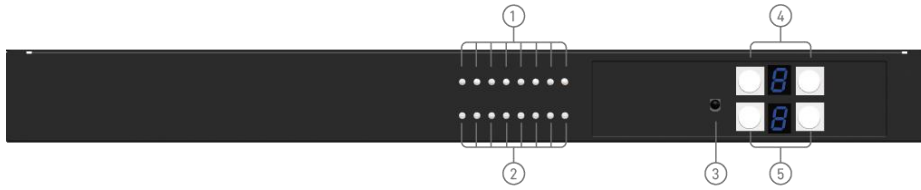


* Additional IR remote controllers and IR blasters can be purchased as optional accessories to control the HDMI sources located separately.

SPECIFICATIONS

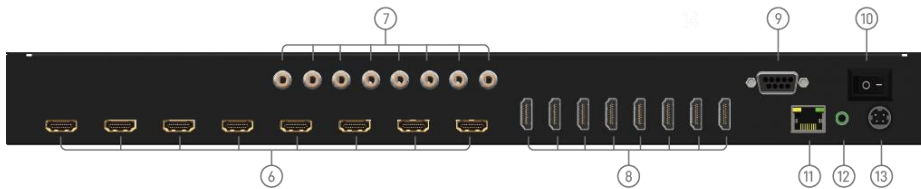
Model Name		MA-5588H4
Technical		
Role of usage	True 8x8 matrix	
HDMI compliance	HDMI 2.0a	
HDCP compliance	HDCP1.4/HDCP 2.2	
Video bandwidth	Single-link 594MHz [18Gbps]	
Video support	HDR 4K2K@60 (4:2:0 10bits) / 4K2K@60 (4:4:4 8bits)	
Audio support	Surround sound (up to 7.1ch) or stereo digital audio	
ESD protection	Human body model — ±15kV [air-gap discharge] & ±8kV [contact discharge]	
PCB stack-up	8-layer board [impedance control — differential 100Ω; single 50Ω]	
Input	8x HDMI / 1x RS-232 / 1x Ethernet / 1x IR socket for IR receiver	
Output	8x HDMI + 8x RCA	
HDMI Input selection	Push button / IR remote control / RS-232 control/ Web control/ Control 4/ IP control/ Cloud control	
IR remote control	Electro-optical characteristics: π = 25° / Carrier frequency: 38kHz	
HDMI connector	Type A [19-pin female]	
RJ-45 connector	WE/SS 8P8C with 2 LED indicators	
RS-232 connector	DE-9 [9-pin D-sub female]	
3.5mm connector	[System IR] Receives IR commands from remote control	
Mechanical		
MA-5588H4		
Enclosure		
Metal case		
Dimensions (L x W x H)	Model	440 x 234 x 44mm [1'4" x 9.2" x 1.7"]
	Package	526 x 318 x 156mm [1'7" x 12.5" x 6.1"]
	Carton	543 x 335 x 344mm [1'8" x 13.2" x 1'1"]
Weight	Model	2645g [93.3oz]
	Package	3899g [8.6 lbs]
Fixedness	1RU rack-mount with ears Wall hanging holes	
Power supply	12V 7.5A DC	
Power consumption	55 Watts [max]	
Operation temperature	0~40°C [32~104°F]	
Storage temperature	-20~60°C [-4~140°F]	
Relative humidity	20~90% RH [no condensation]	

Front Panel



1. **Source Status:** Input source detection LED
2. **Display Status:** Output display detection LED
3. **IR SENSOR:** IR sensor for receiving the IR commands from IR remote
4. **Output Push Button & 7-segment LED:** Front panel push buttons used to select the number of display channel & LED display for output ports
5. **Input Push Button & 7-segment LED:** Front panel push buttons used to select the number of input source & LED display for input channels

Rear Panel

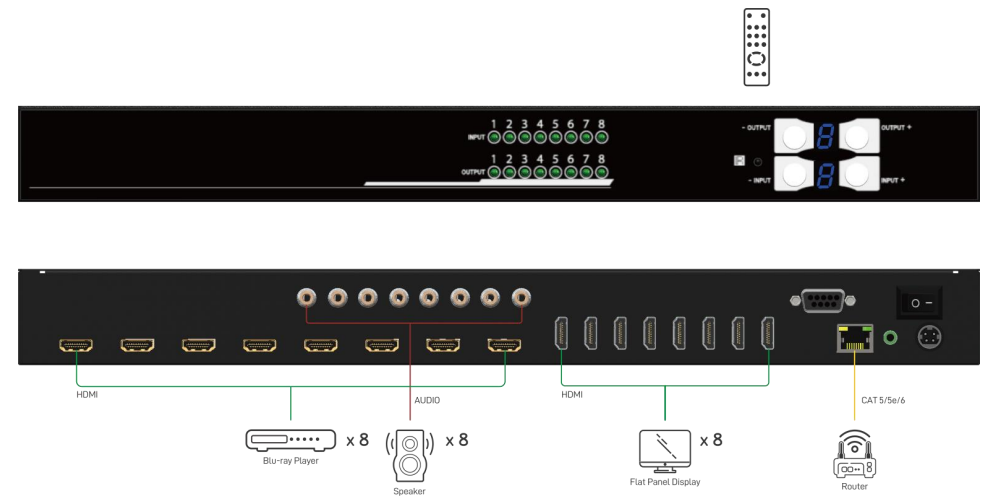


6. **INPUT 1-8:** HDMI inputs
7. **Audio OUT:** ARC & Audio Extraction
8. **OUTPUT 1-8:** HDMI outputs
9. **RS-232:** RS-232 control port
10. **Power Switch**
11. **Ethernet:** Ethernet control port
12. **System IR Receiver:** Ext. IR receiver
13. **+12V DC:** 12V DC power jack

MA-5588H4 as master

1. Connect all sources to HDMI Inputs on the 8x8 HDMI Matrix MA-5588H4.
2. Connect all displays to HDMI Outputs on the 8x8 HDMI Matrix MA-5588H4.
4. Connect the +12V 7.5A DC power supply to the 8x8 HDMI Matrix MA-5588H4.

CONNECTION DIAGRAM



OPERATION APPROACH

Method A: Push-in Button

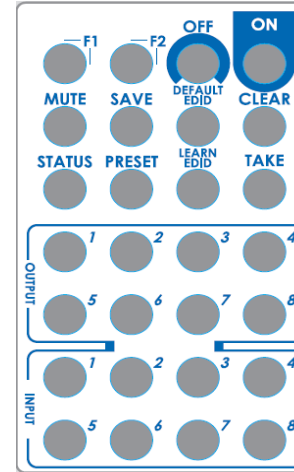


1. IN/OUT MAP

- 1) Use the "+" or "-" output push button to select the number of display
 - 2) Use the "+" or "-" input push button to select the number of input source
- "+": change selected input/output port in ascending order
 "-": change selected input/output port in descending order

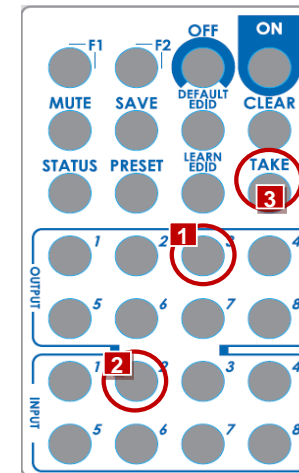
After you select the desired input/output port, the LED will blink twice and the setting will be effective

Method B: IR Remote Control



1. IN/OUT Switch

Operation	Procedure	7-Segment LED
IN/OUT Switch	Output Number (1~8) + Input Number (1~8)	
Ex: Input 2 To Output 3	1. Press output number key "3" to select Output 3	3 -
	2. Press input number key "2" to select Input 2	3 2
	3. Press "TAKE" button	



2. Function Key

Button	Function
OFF	Standby mode
ON	Power on the matrix switcher
MUTE	Turn off output's video and audio
STATUS	Preset output status
SAVE	Save current mapping mode
PRESET	Preset mapping mode
DEFAULT EDID	Begin default EDID selection
LEARN EDID	Begin EDID learning from one output
CLEAR	Clear the previous IR operation procedure
TAKE	Trigger the previous setting
F1	Reserved
F2	Reserved

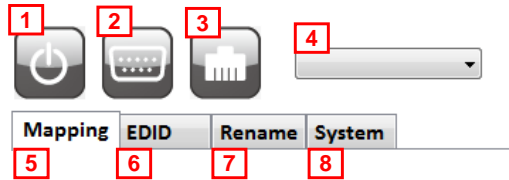
Operation	Procedure	7-Segment LED
Output Status	Status + Output Number (1~8) + Take	
Ex: Output 4 (Input 2)	1.Press "STATUS" button	- -
	2.Press output number key "4" to select Output 4	4 -
	3.Press "TAKE" button	4 2
Save Current Mapping	Save + Output Number (1-8 storage site) + Take	
Ex: Save current mapping to 5	1.Press "SAVE" button	d -
	2.Press output number key "5" to select the storage site 5	d 5
	3.Press "TAKE" button	
Preset Mapping	Preset + Output Number (1-8 storage site) + Take	
Ex: Preset saved mapping from 5	1.Press "PRESET" button	P -
	2.Press output number key "5" to select the storage site 5	P 5
	3.Press "TAKE" button	
Learn default EDID	Default EDID + Output Number (1-8 default EDID) + Input Number (input 1~8) + Take	
Ex: Default EDID 2 Input 3	1.Press "DEFAULT EDID" button	E d
	2.Press output number key "2" to select default EDID 2	2 d
	3.Press input number key "3" to select Input 3	2 3
	4.Press "TAKE" button	0 0 (success) F F(fail)
Learn Output EDID	Learn + Output Number (Output 1~8) + Input Number (input 1~8) + Take	
Ex: Learn Output 4	1.Press "LEARN" button	E

Input 3		L
	2.Press output number key "4" to select Output 4	4 L
	3. Press input number key "3" to select Input 3	4 3
	4.Press "TAKE" button	0 0 (success) F F(fail)
Mute Output	Mute + Output Number (1~8) + Take	
Ex: Mute Output 3	1. Press "MUTE" button	- 0
	2. Press output number key "3" to select Output 3	3 0
	3.Press "TAKE" button	

Method C: Software Control through RS-232 port

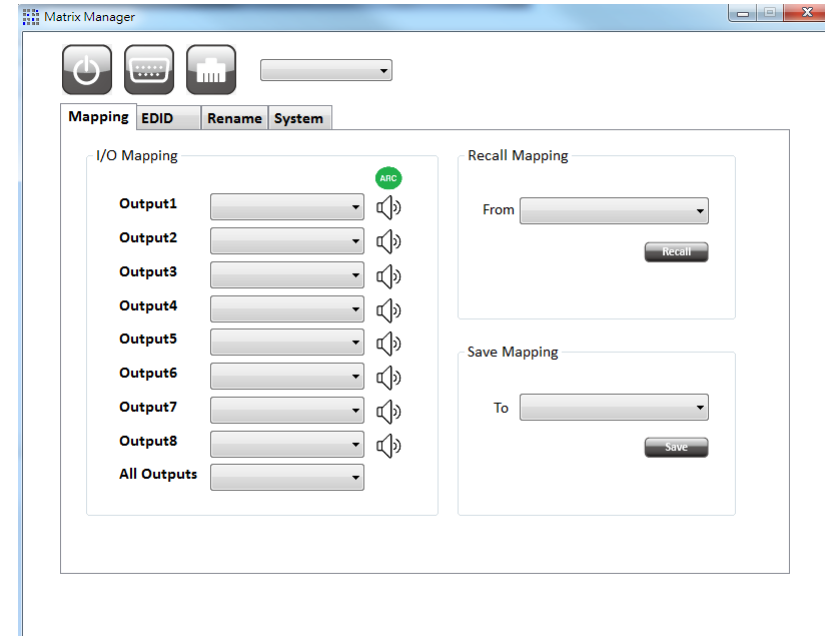
1. System Requirement

- (1) OS Information: MS WinXP/7
- (2) Baud rates: 115200
- (3) Software size: 2 MB
- (4) Minimum RAM requirement: 256 MB



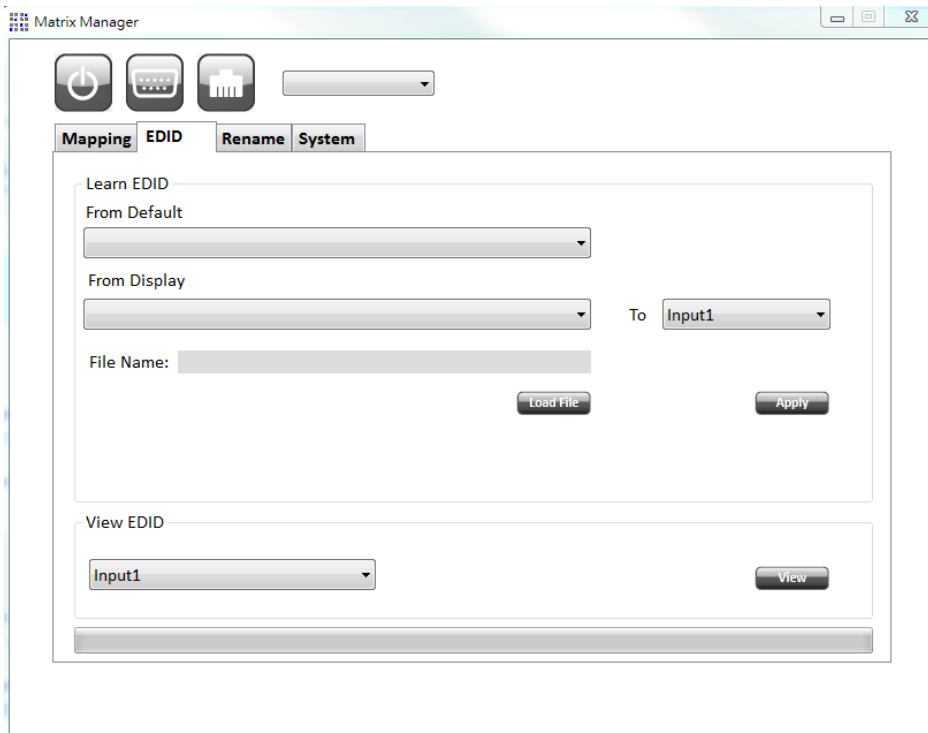
1	Power ON/ Standby mode	5	I/O Routing Button
2	Control SW via RS-232	6	EDID Button
3	Control SW via IP	7	Rename I/O Button
4	COM Port Selection	8	Network Setting, Default Reset & Firmware Update Button

1. I/O Routing Button



- I/O:
 - Switch the input for each output
 - ARC: Enable/ Disable ARC
- Recall Mapping:
 - Select the stored Mapping (1-16)
 - Click "Recall" button to recall previous mapping which are saved
- Save Mapping:
 - Select Mapping (1-16)
 - Click "Save" button to save current mapping

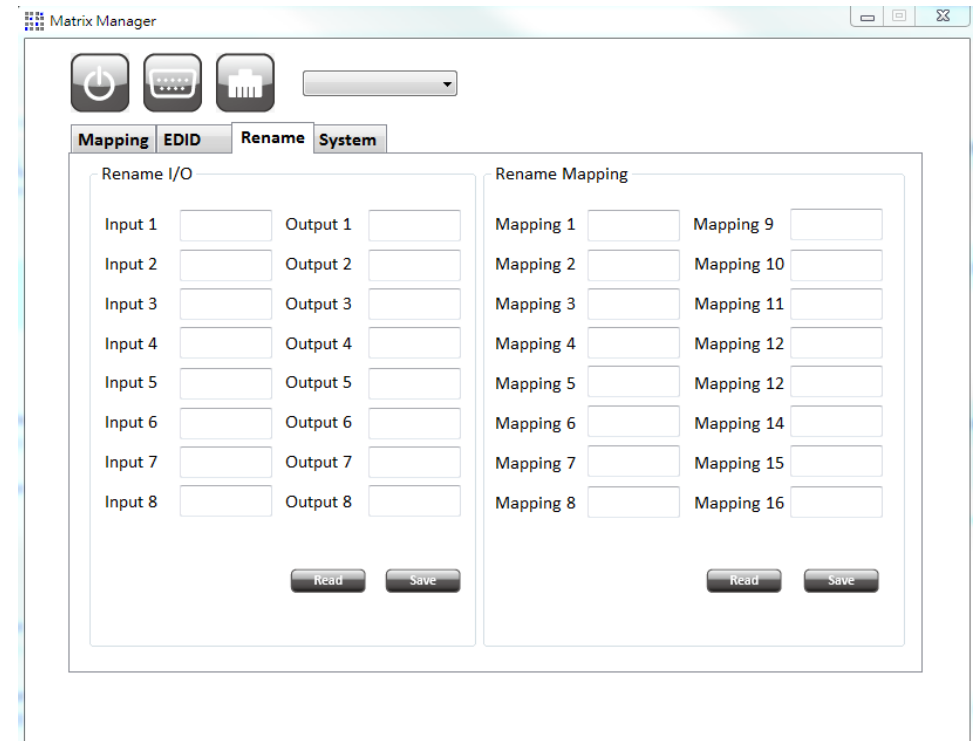
2. EDID Button



- Learn EDID from Default to Input
 - Select Default EDID(1-17 Default EDID)
 - Select designated Input
 - Click “Apply” button to learn from default EDID
- Learn EDID from Display to Input
 - Select output
 - Select designated Input
 - Click “Apply” button to learn from display EDID
- Load EDID File to Input
 - Click “Load File” button to select the EDID file
 - Select designated Input
 - Click “Apply” button to load EDID File

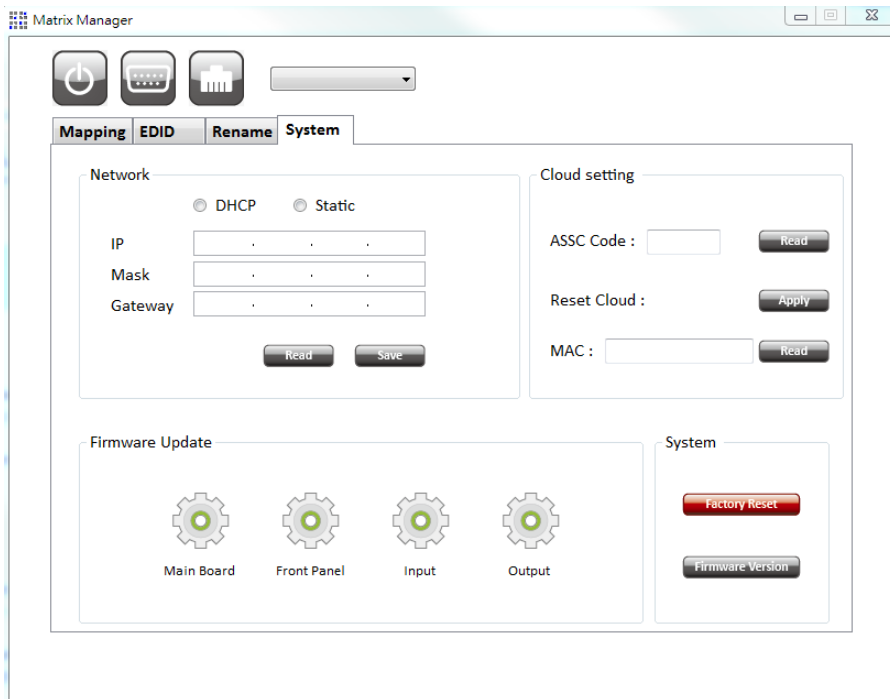
- View EDID
 - Select Input or HDMI output
 - Click “View” button to read and analyze the EDID

3. Rename I/O Button



- Rename I/O:
 - Rename the Inputs
 - Rename the Outputs
- Rename Mapping:
 - Rename the Mappings

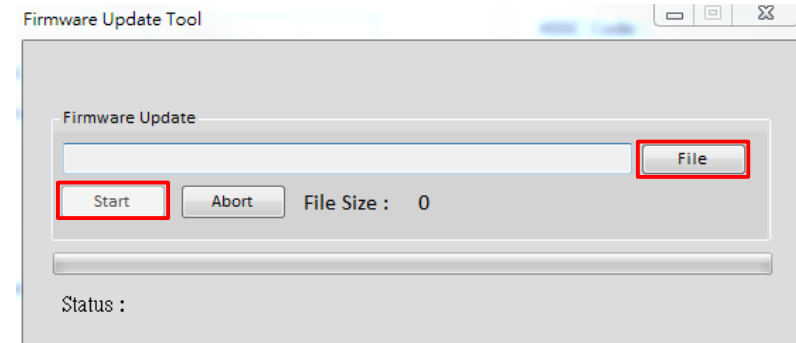
4. System Button



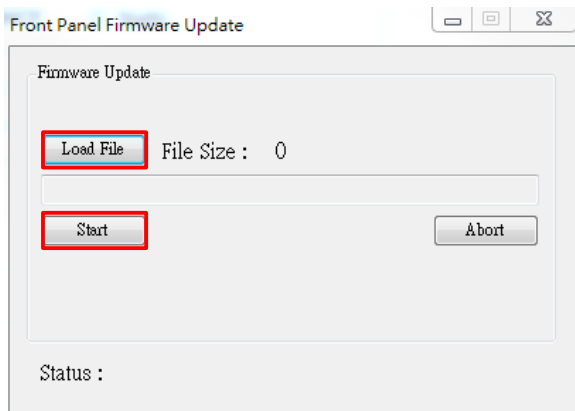
- Network-DHCP mode
 - After selecting DHCP, device will reboot automatically
 - Click “Read” button to automatically get the IP address Information
- Network-Static mode
 - After selecting static, device will reboot automatically
 - Key in the “IP”, “MASK”, “GATEWAY” information.
 - After setting IP address, please click “Save” button to save IP address Information. The device will reboot automatically
- “Save” Button
 - Save the IP address which is manually entered
- “Read” Button *The default IP address is 192.168.1.70
 - Read the IP address from the device
- Cloud setting-Association Code

- To get an “association code”. The device can use this code to pair with cloud server.

- Cloud setting-Reset Cloud
 - To reset cloud after a successful pairing
- Cloud setting-MAC
 - Read the device’s MAC address information
- Firmware Update-Main Board
 - Click “**Main Board**” button and another window will pop-up
 - Click “**File**” button to load firmware
 - Click “**Start**” button to do firmware update
 - Please power cycle after firmware update complete

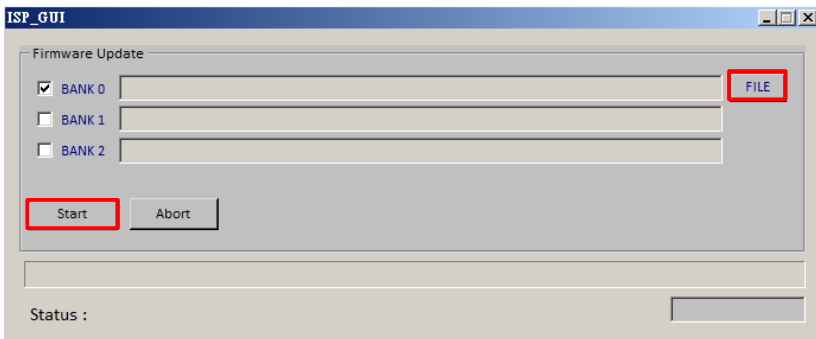


- Firmware Update-Front Panel
 - Click “**Front Panel**” button and another window will pop-up
 - Click “**Load File**” button to load firmware
 - Click “**Start**” button to do firmware update
 - Please power cycle after firmware update complete



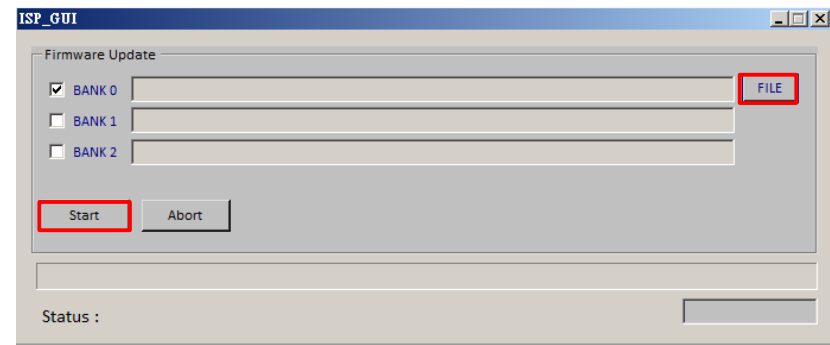
➤ Firmware Update-Input

- Click **"Input"** button and another window will pop-up
- Click **"FILE"** button to load firmware
- Click **"Start"** button to do firmware update
- Please power cycle after firmware update complete



➤ Firmware Update-Output

- Click **"Output"** button and another window will pop-up
- Click **"FILE"** button to load firmware
- Click **"Start"** button to do firmware update
- Please power cycle after firmware update complete



➤ System-Factory Reset

- To do factory default reset

➤ System-Firmware Version

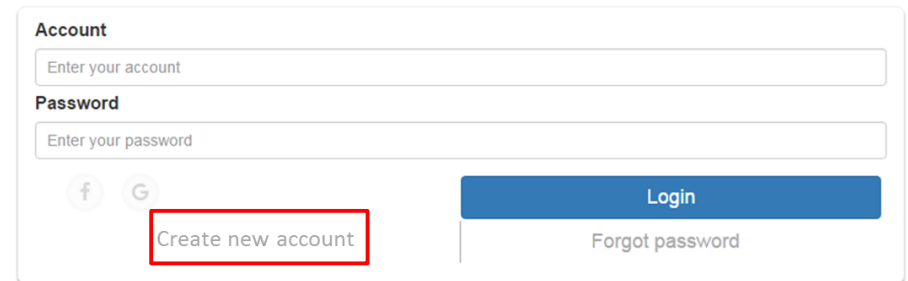
- To get the F/W version information

Method D: Cloud Control (Eagleyes) through Ethernet port

Create Account

The first time to use the Eagleyes service, please create a new account.

1. Access Eagleyes (<http://www.eagleyes.io>) and click "Create new account".



2. The Registration page will pop up and please fill in your email and password information to create your private account.

Create new account ✕

Please enter your email as account

example@gmail....

Please enter your password

1234XXX

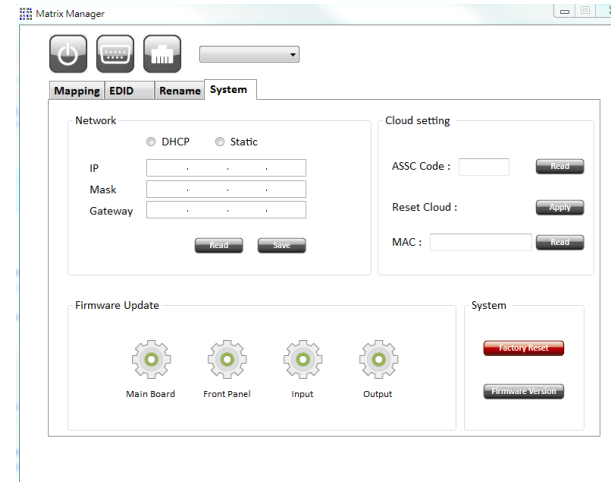
Please enter your password again

please enter your password again

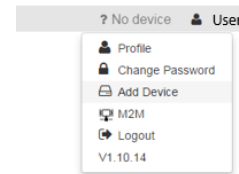
Cancel Apply

Add Device to Eagleyes

1. Firstly, please make sure the device is connected to the Ethernet. Then please executing the software with device to get the association code (Note: the status of software is connected).



2. Access Eagleyes (<http://www.eagleyes.io>) or download Eagleyes APP, and then log in your account on the right top corner. Click **Add device** to add the device which you just got its association code.



3. Enter the Installer Email for online support in the future, and the Association Code for pairing with your device.

Add new device ✕

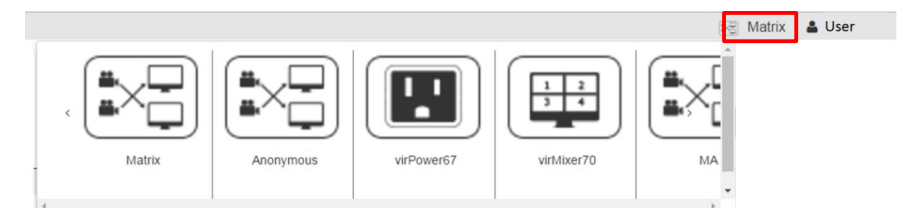
Installer Email

installer@gmail.com

Association Code

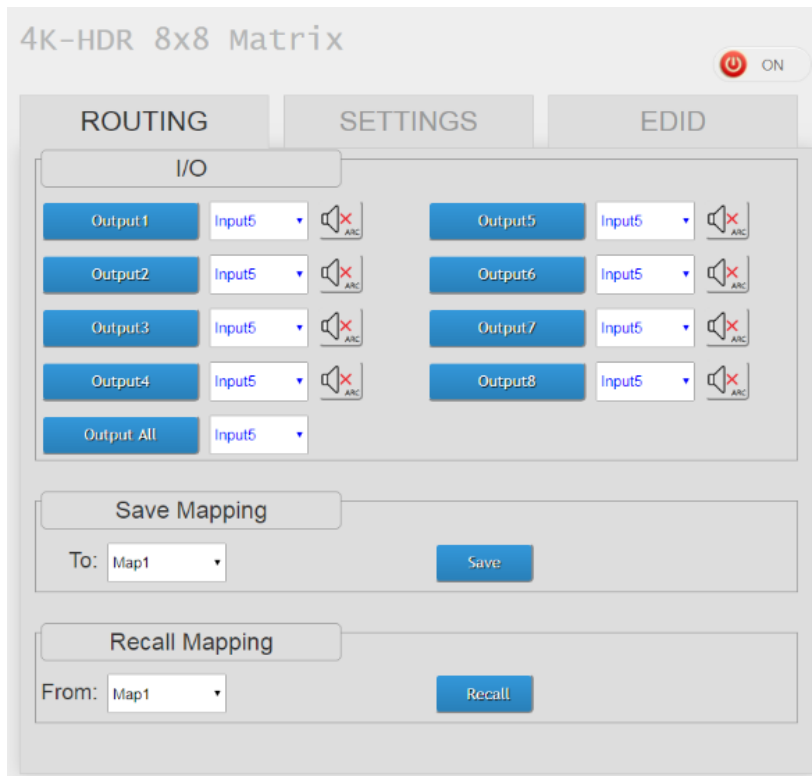
Close Apply

4. After adding the device, the list of device related to your account will show on the right top corner. You can click the button to switch device for control.



Method E: Web Interface Control

The default IP address: 192.168.1.70



The EDID learning function is only necessary whenever you encounter any display on the HDMI output port that cannot play audio and video properly. Because the HDMI source devices and displays may have various level of capability in playing audio and video, the general principle is that the source device will output the lowest standards in audio format and video resolutions to be commonly acceptable among all HDMI displays. In this case, a 720p stereo HDMI signal output would be probably the safest choice. Nevertheless, the user can force the matrix to learn the EDID of the lowest capable HDMI display among others to make sure all displays are capable to play the HDMI signals normally.

There are **TWO methods** to do EDID Learning as below,

1. IR Remote Control: Please refer to the **Operation Approach\ Method B: IR Remote Control (Page 6.)**
2. Software Control: Please refer to the **Operation Approach\ Method C: Software Control through RS-232 port (Page 9. 10)**

There are **seventeen embedded default EDID** as below,

1. Full-HD(1080p@60)-24bit 2D & 2ch
2. Full-HD(1080p@60)-24bit 2D & 7.1ch
3. Full-HD(1080p@60)-24bit 3D & 2ch
4. Full-HD(1080p@60)-24bit 3D & 7.1ch
5. HD(1080i@60)(720p@60)-24bit 2D & 2ch
6. HD(1080i@60)(720p@60)-24bit 2D & 7.1ch
7. Full-HD(1080p@60)-36bit 2D & 2ch
8. Full-HD(1080p@60)-36bit 2D & 7.1ch
9. Full-HD(1080p@60)-24bit 2D & 2ch & Dolby 5.1ch
10. 4k2k@30 2ch
11. 4k2k@30 7.1ch
12. 4k2k@30-3D-PCM2CH(2ch)
13. 4k2k@30-3D-BITSTR(7.1ch)
14. 4k2k@60-420-3D-PCM2CH(2ch)
15. 4k2k@60-420-3D-BITSTR(7.1ch)
16. 4k2k@60-3D-PCM2CH(2ch)
17. 4k2k@60-3D-BITSTR(7.1ch)

Q Can every TV work with the HDMI matrix?

A Basically, the answer is YES. But if your TV can not support 1080p, please refer the EDID LEARNING section to learn EDID from your TV.

Q What is EDID? Why do I need to learn EDID?

A EDID contains the whole information of the display such as the resolution and audio setting which this display can support. Therefore, based on the EDID information, media player will pick up the most suitable resolution and audio setting to the display. In order to faithfully transmit the EDID information from display to the media player, learning EDID from display to this device is necessary.

Q What should I do to learn EDID for the matrix?

A Due to the limitation of HDMI, the source device can only output one format of video and audio. In other words, the source device cannot output 720p and 1080p video at the same time, or output stereo and surround sound at the same time. Therefore, you may need to manually setup each HDMI input for desirable audio/video output format. The mechanism of EDID Learning is to pick up the HDMI display with the lowest capability among the ones you would use for this input source. For example, if user would like to play the Input-2 upon output-2, output-3 and output-4, and only output-3 cannot support 1080p [support up to 720p only], please learn the EDID from the display connected to the output-3 at the Input-2 port. Of course, if output-3 would get the HDMI signals from every HDMI input, please learn EDID information from output3 to all four HDMI inputs. For more information about EDID Learning, please refer to EDID LEARNING section.

Q My TV can support 1080p, but why there is no audio?

A The factory default EDID of this device is 1080p & 2ch audio. However, there would be a problem after you change to use 1080p & 7.1ch if the TV cannot support 7.1ch audio. Please use the default EDID, 1080p & 2ch audio.

Q When I set an audio amplifier (AV receiver) between TV and the matrix to extract 7.1ch audio, but why there is still no audio?

A Basically, the default EDID of the chosen input can support 7.1ch audio, but the problem is that the EDID of the amplifier still cannot match the default setting. Therefore, the best method is to learn EDID from the amplifier directly. Please refer to EDID LEARNING section and follow the steps to learn the EDID. When learning EDID from the amplifier, user just needs to connect the matrix and amplifier. **Please don't connect HDMI cable between amplifier and TV when the EDID learning is proceeding.**

Q When I play the same content upon multi-displays, why only the TV equipped with amplifier can have 7.1ch audio, and the others don't have 7.1ch audio even no stereo?

A Due to the limitation of HDMI, the source only can choose one video and one audio format to play, which can be either 1080p and 7.1ch or 1080p and stereo audio. It means when the user sets the matrix at 1080p and 7.1ch, the source will only play the content under this format. Therefore if the TV cannot decode 7.1ch audio, there is definitely no audio.

The SELLER warrants the **MA-5588H4 8x8 HDMI 2.0a matrix with Audio Extractor & ARC** free from defects in the material and workmanship for 1 year from the date of purchase from the SELLER or an authorized dealer. Should this product fail to be in good working order within 1 year warranty period, The SELLER, at its option, repair or replace the unit, provided that the unit has not been subjected to accident, disaster, abuse or any unauthorized modifications including static discharge and power surge. This warranty is offered by the SELLER for its BUYER with direct transaction only. This warranty is void if the warranty seal on the metal housing is broken.

Unit that fails under conditions other than those covered will be repaired at the current price of parts and labor in effect at the time of repair. Such repairs are warranted for 90 days from the day of reshipment to the BUYER. If the unit is delivered by mail, customers agree to insure the unit or assume the risk of loss or damage in transit. Under no circumstances will a unit be accepted without a return authorization number.

The warranty is in lieu of all other warranties expressed or implied, including without limitations, any other implied warranty or fitness or merchantability for any particular purpose, all of which are expressly disclaimed.

Proof of sale may be required in order to claim warranty. Customers outside Taiwan are responsible for shipping charges to and from the SELLER. Cables and power adapters are limited to a 30 day warranty and must be free from any markings, scratches, and neatly coiled.

The content of this manual has been carefully checked and is believed to be accurate. However, The SELLER assumes no responsibility for any inaccuracies that may be contained in this manual. The SELLER will NOT be liable for direct, indirect, incidental, special, or consequential damages resulting from any defect or omission in this manual, even if advised of the possibility of such damages. **Also, the technical information contained herein regarding the MA-5588H4 features and specifications is subject to change without further notice.**